



**RETROFIT**  
ACADEMY CIC

**LEVEL 3 AWARD IN**

# **ENERGY EFFICIENCY FOR OLDER AND TRADITIONAL BUILDINGS**





## LEVEL 3 AWARD

# HOW TO UPGRADE OLDER HOMES THE PAS 2035 WAY



BOOK YOUR PLACE

0330 055 7629 | [info@retrofitacademy.org](mailto:info@retrofitacademy.org)

### Certification

ABBE Level 3 Award in Energy Efficiency for Older and Traditional Buildings

### Assessment

Online multiple-choice examination  
Final Professional Discussion

**Eligibility** You must be 18 years or older and should have some knowledge and experience in the construction sector.

**Method of Study** Supported Online Learning

**Duration** The course takes approximately 27 hours to complete.

**Timescale** Candidates have up to six months to complete the course.

**Cost** £595 + VAT

## RESPECTING CHARACTER WHILST IMPROVING ENERGY PERFORMANCE

Gain the specialist skills needed to enhance the energy efficiency of older and traditional buildings while preserving their unique character.

The ABBE Level 3 Award in Energy Efficiency for Older and Traditional Buildings is designed to address these challenges by providing you with the knowledge and skills to improve energy performance while respecting the fabric and character of these buildings.

### Career Development Opportunities

Any Retrofit Assessor, Retrofit Coordinator or Retrofit Designer working on pre-1919 properties is required to hold this qualification under PAS 2035.

Approximately 21% of UK homes were built pre-1919, equating to around 5.1 million dwellings, meaning this course will open many doors for retrofit professionals in the sustainability, construction and conservation sectors.



# COURSE DETAILS

**Why take this course?**  
Enhancing the energy efficiency of older and traditional buildings requires specialised knowledge to preserve their unique character while meeting modern standards. These buildings are a vital part of the UK's heritage but present unique challenges.

The ABBE Level 3 Award in Energy Efficiency for Older and Traditional Buildings equips professionals with the skills to improve energy performance while respecting the historical fabric of these structures. Derived from the BS 7913: 2023 – Guide to the Conservation of Historic Buildings, the course builds expertise in retrofitting traditional and vulnerable properties.

By completing the course, you'll meet TrustMark requirements and be prepared to tackle retrofitting challenges effectively.

**The Learning Experience**  
When you enrol onto the course you'll gain access to The Retrofit Academy's cutting-edge online learning platform where you can access your course 24/7 for your convenience.

This self-paced online course combines practical insights with real-world applications, ensuring you gain knowledge that is both comprehensive and actionable.

The course is assessed through an online multiple-choice examination and final professional discussion.

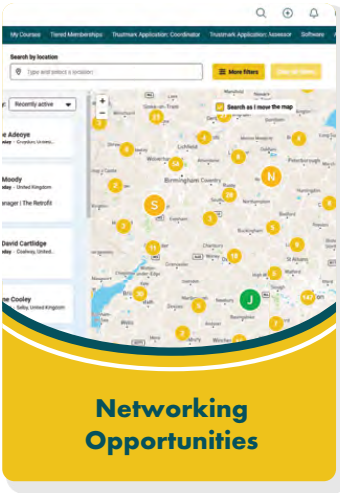
- Benefits**
- Supported, flexible online learning
  - State-of-the-art online learning platform
  - Gain specialist knowledge
  - Ensure industry compliance
  - Advance your career
  - Access and profile on the Retrofit Academy Hub



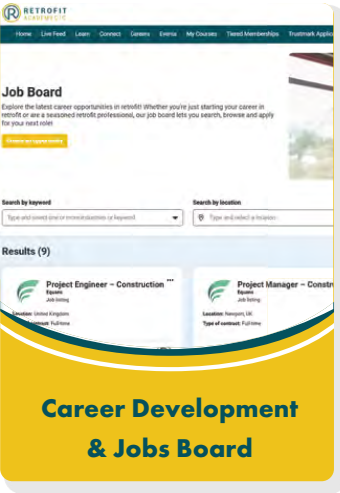
BOOK YOUR PLACE  
0330 055 7629 | info@retrofitacademy.org

# ACCESS TO THE RETROFIT ACADEMY HUB

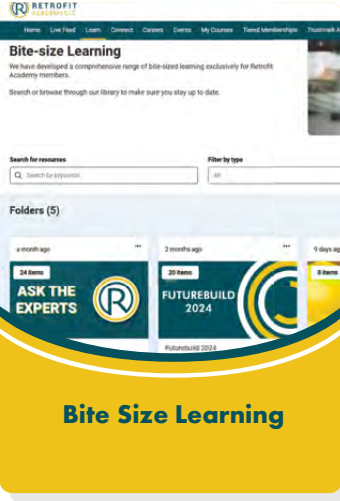
The Retrofit Academy Hub is an online membership platform that is your one-stop shop for support, networking and lifelong learning. It is home to a range of unique content, events and community discussion forums that are essential to supporting your continued professional development.



Networking Opportunities



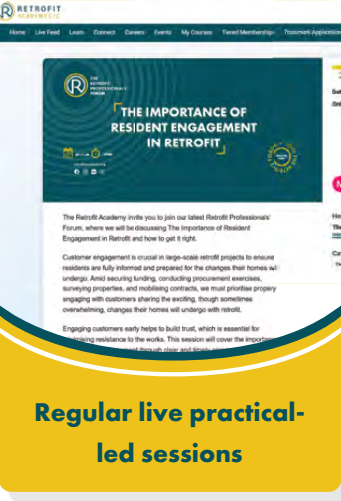
Career Development & Jobs Board



Bite Size Learning



Regular live case study-led sessions



Regular live practical-led sessions



## WORKING WITH INDUSTRY EXPERTS

### Lead Tutor: Clive Rowland

Clive has over 15 years' experience in the retrofit industry, including energy assessments of existing and new build dwellings, thermal imaging, air pressure testing, building forensics, post occupancy evaluation and building performance monitoring. He co-wrote and delivered the training for part of the PAS 2035 Retrofit Co-ordinator qualification and was part of the advisory panel for the Green Deal Advisor National Occupational Standards.

### Course Author: Alan Pither

Alan Pither has been professionally involved in energy efficiency assessment and advice since 1985. This includes the development of energy efficiency and climate change strategies, as well as building surveys and recommendations for energy efficiency improvement measures. The latter covers all types of buildings with the majority being large domestic properties that are being refurbished and/or extended, usually off the mains gas grid, so advice on alternative heating options is also needed. In addition to training, he offers a range of consultancy services to local authorities, housing associations and individual building owners.



BOOK YOUR PLACE

0330 055 7629 | [info@retrofitacademy.org](mailto:info@retrofitacademy.org)



## COURSE MODULES

### Module 1

#### Age, Nature, and Characteristics of Older and Traditional Buildings

*This module teaches about the key characteristics of traditional buildings, giving learners the recognition and understanding of a property's age, heritage values and significance, construction methods and materials, condition and thermal performance, as well as the implication of each of these in the introduction of energy efficiency measures.*

### Module 2

#### Assessing Options for the Introduction of Energy Efficiency Measures into Older and Traditional Buildings

*The next module covers how to assess and interpret the options for the introduction of energy efficiency measures, with reference to the characteristics of specific buildings, based on accurate identification and evaluation of insulation, ventilation and building performance factors. It also establishes the relevant investigative measures and evaluation of available information on the building and its thermal performance.*

### Module 3

#### Making Recommendation and Giving Advice on the Introduction of Energy Efficiency Measures to Older and Traditional Buildings

*The final module covers how to select the appropriate energy efficiency measures based on a full understanding of the buildings' current thermal performance and structure. It also involves advising the installation of measures and how to maximise the thermal performance of the building.*

# LEARN HOW TO UPGRADE TRADITIONAL HOMES THE PAS 2035 WAY



[www.retrofitacademy.org/training/courses](https://www.retrofitacademy.org/training/courses)



0330 055 7629 | [info@retrofitacademy.org](mailto:info@retrofitacademy.org)  
Barn 4, Dunston Business Village, Stafford Road, Stafford, ST18 9AB.  
[www.retrofitacademy.org](https://www.retrofitacademy.org)

